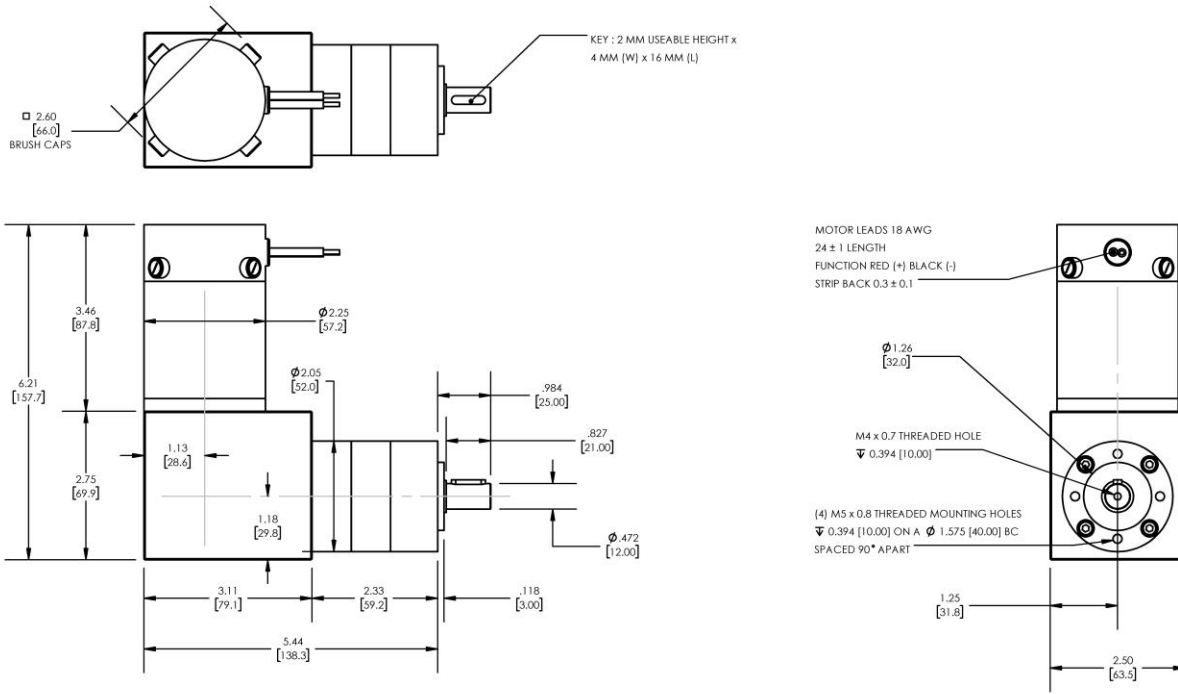




REVERSIBLE BRUSHED DC RIGHT-ANGLED GEARMOTOR

Model Number:

MMP S22-346C-12V GRA52-046



PLANETARY GEARMOTOR OUTPUT PARAMETERS:	VALUE	UNITS	TOLERANCE
Gearhead Ratio (exact)	45.56 : 1		
Gearhead Shaft Output Speed (at full-load)	78	RPM	MAX
Gearmotor Rated Continuous Torque	109	In-Lbs	MAX
Gearmotor Rated Peak Torque	212++	In-Lbs	----
Gearhead Standard Backlash	45	Arc Minutes	MAX
Gearhead Efficiency	75%	----	----
Output Shaft Radial Load Capacity	72	Lbs	MAX
Output Shaft Axial Load Capacity	23	Lbs	MAX
Gearmotor Total Weight	5.7	Lbs	MAX

++ All Peak Torque values are dependent upon duty. Contact our sales office for details.

DC MOTOR PERFORMANCE PARAMETERS:	VALUE	UNITS	TOLERANCE
Rated DC Voltage	12	DC VOLTS	----
Rated Continuous Current	18.5	AMPERES	----
No-Load Speed	5000	RPM	MAX
Rated Speed	3558	RPM	+/- 15%
Rated Continuous Power Out	134	WATTS	+/- 15%
Rated Continuous Torque	51	OZ-IN	----
Peak Torque (motor only)	137	OZ-IN	----
No-Load Current	2.66	AMPERES	MAX
Back EMF Constant (Ke)	2.4	V/KRPM	+/- 10%
Torque Constant (Kt)	3.2	OZ-IN/AMP	+/- 10%
DC Armature Resistance	0.19	OHMS	+/- 15%
Armature Inductance	0.06	mH	+/- 15%
Armature temperature	155	DEG. C	MAX

NOTES:

- ENCODER & BRAKE OPTIONS AVAILABLE – [FOLLOW THIS LINK FOR DETAILS](#)
- NEMA MOUNTING FLANGE OPTION AVAILABLE – [FOLLOW THIS LINK FOR DETAILS](#)

MIDWEST MOTION PRODUCTS, INC

DESIGN, MANUFACTURING & DISTRIBUTION - MOTION CONTROL EQUIPMENT

www.midwestmotion.com

email: sales@midwestmotion.com